



# PCS ADVISORS

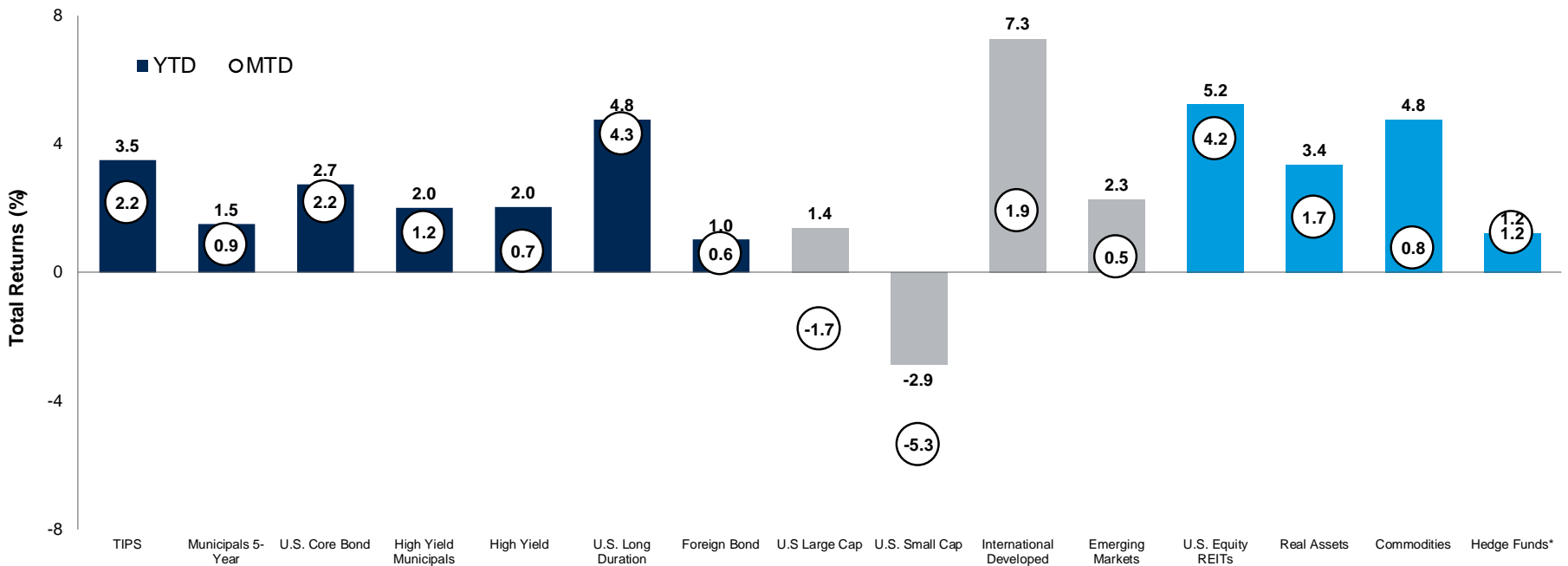
Let our independence ignite yours.™

# Market Recap

---

February 2025

# Asset Class Performance



Source: Morningstar Direct. As of February 28, 2025. \*Hedge fund returns are as of January 31, 2025.

## Fixed Income (February)

+ Rates generally moved lower in the month, a boon for fixed income assets. Easing inflation metrics (PCE) coupled with rising economic uncertainty were main drivers. Core bonds and longer duration assets performed best.

+ High yield markets were positive in the month but lagged higher quality areas. Uncertainty surrounding executive branch policy, including the potential impact of tariffs, weighed on investor sentiment and spreads moved higher.

## Equity (February)

- Growing concerns about the macro economic backdrop sent domestic equities lower in February. Large cap was slightly more resilient than its small cap counterpart.

+ International equities outpaced domestic markets and developed regions outperformed emerging. A reversal of high-flying technology related names had less of an impact abroad and easing policy rates in Europe helped bolster equity markets in the region.

## Real Asset / Alternatives (February)

+ Despite the broader equity market sell-off, equity REITs posted a positive return, benefiting from the declining interest rate environment.

+ Real Assets had a positive month. Infrastructure related, commodities, and inflation linked fixed income all contributed.

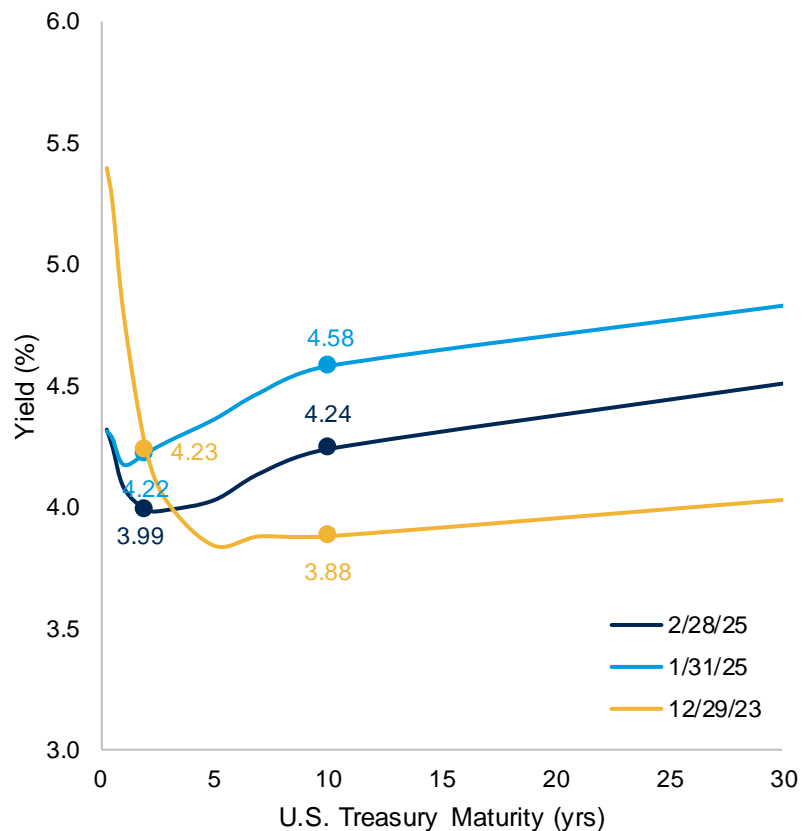
+ Energy and industrial metals helped propel commodity markets higher during February.

See disclosures for list of indices representing each asset class. Past performance does not indicate future performance and there is a possibility of a loss. Indices cannot be invested in directly.

# Fixed Income Market Update

## U.S. Treasury Yield Curve

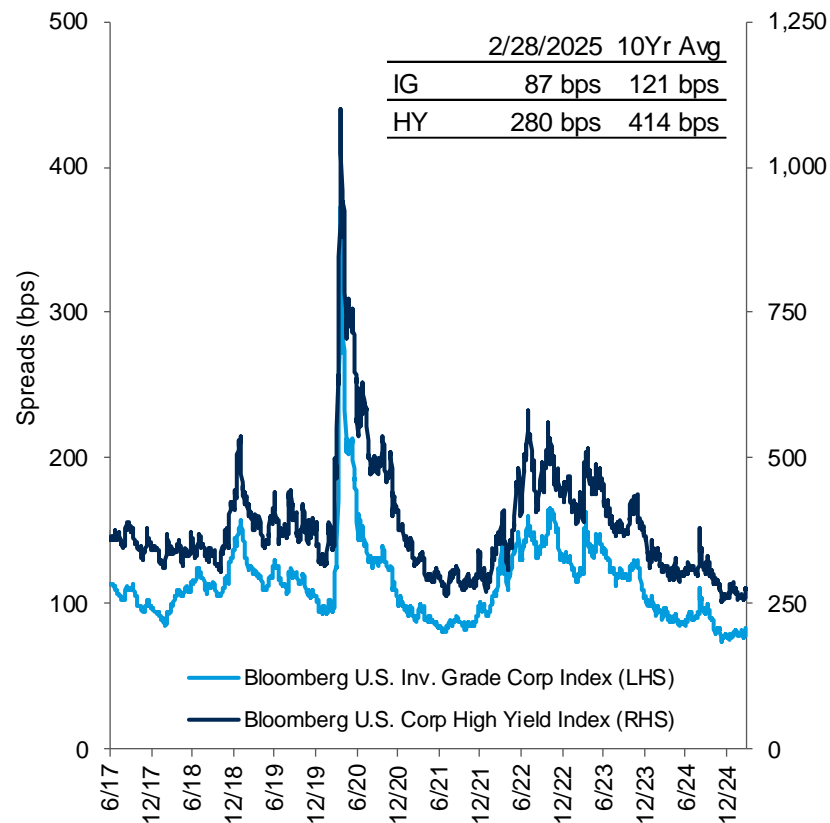
Interest rates were volatile during the month but ultimately ended lower, as investors digested the ping-pong of tariff announcements and delays, softening consumer data and easing inflation metrics. The market implied probability of more rate cuts this year increased from a month earlier.



Source: FactSet. As of February 28, 2025.

## Corporate Credit Spreads – Trailing 5 Years (February)

Credit spreads widened during February, most notably in the back half of the month. Growing signs of a softening economic backdrop and uncertainty as to the impact of tariffs on corporate fundamentals were headwinds for riskier segments of the fixed income market.



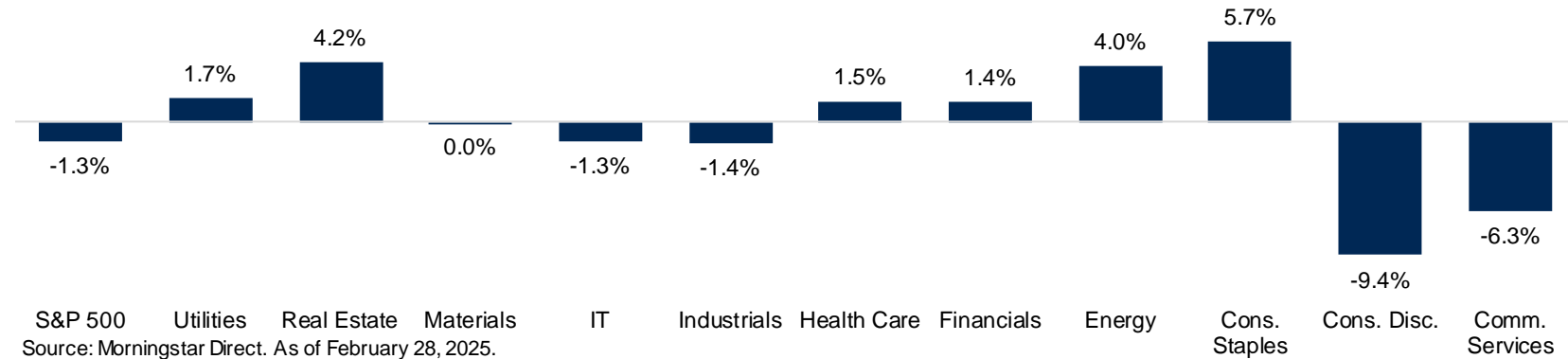
Source: FactSet. As of February 28, 2025.

See disclosures for list of indices representing each asset class. Past performance does not indicate future performance and there is a possibility of a loss. Indices cannot be invested in directly.

# Equity Market Update

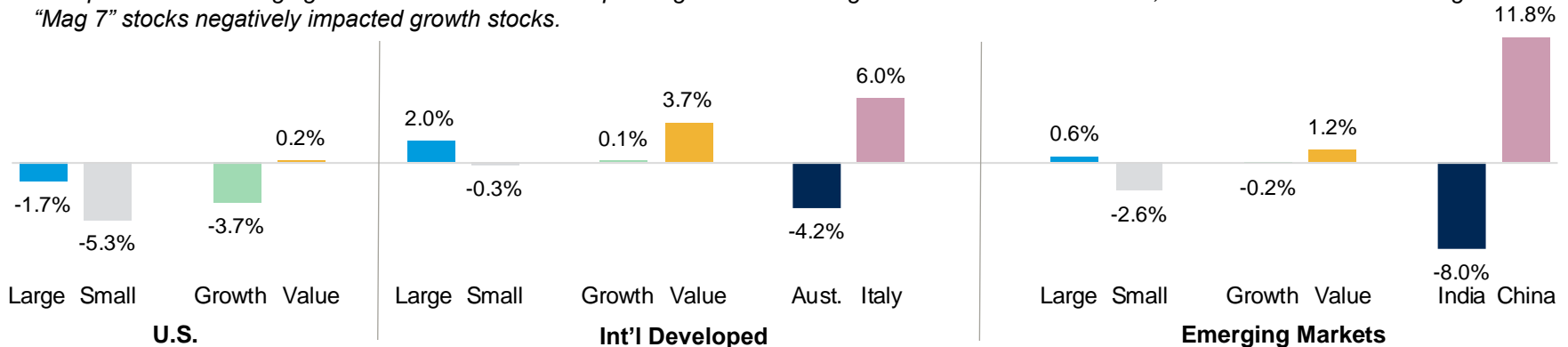
## U.S. Equities – Returns by Sector (February)

The S&P 500 took a downward turn the last two weeks of the month and ended in negative territory. Sectors typically viewed as “higher quality” – such as consumer staples – fared best. However, consumer discretionary, information technology and communications were the culprits of the weak results. Lackluster sales in Europe and disappointing self-driving technology in China led Tesla to fall almost 30% during February.



## Market Capitalization, Style, and Select Country Performance (February)

Equity markets were mixed around the globe with non-U.S. markets outperforming domestic. Easing monetary policy abroad helped propel markets, especially in Europe. China was a standout country within emerging markets, fueled by optimism following President Xi’s meeting with technology entrepreneurs encouraging more innovation. Value outpaced growth across regions as well. Within the U.S., a reversal of some of the high valuation “Mag 7” stocks negatively impacted growth stocks.



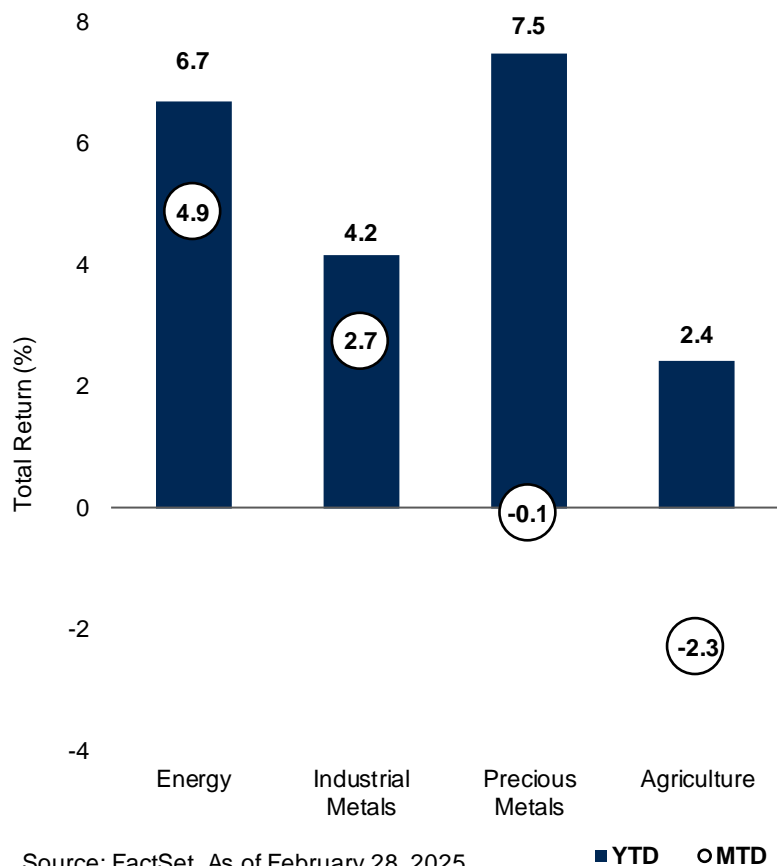
Source: Morningstar Direct. As of February 28, 2025.

See disclosures for list of indices representing each asset class. Past performance does not indicate future performance and there is a possibility of a loss. Indices cannot be invested in directly.

# Real Asset Market Update

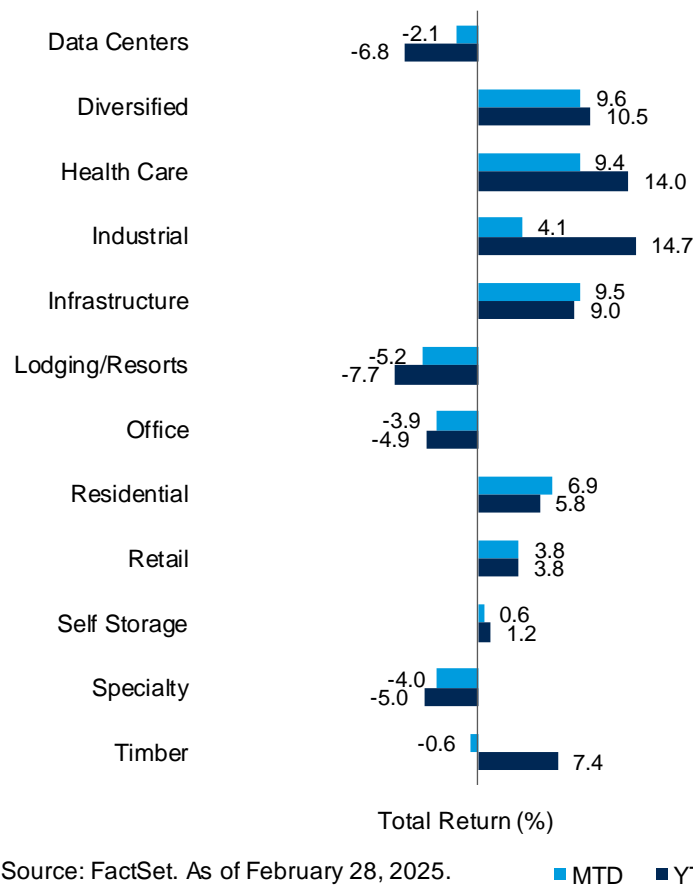
## Commodity Performance (February)

Commodities markets moved higher during February. The energy sub-component led the way as natural gas prices surged mid month amidst a cold snap. Industrial metals benefited from strength in China, one of the largest consumers of these materials.



## REIT Sector Performance (February)

Lower interest rates in the month was a tailwind for equity REITs. Infrastructure had a favorable earnings season while data centers pulled back as AI enthusiasm waned following the news regarding Deepseek. Lodging was negatively impacted by concerns of slowing economic growth.



See disclosures for list of indices representing each asset class. Past performance does not indicate future performance and there is a possibility of a loss. Indices cannot be invested in directly.

# Financial Markets Performance

**Total Return as of February 28, 2025**  
**Periods greater than one year are annualized**  
**All returns are in U.S. dollar terms**

<b>Global Fixed Income Markets</b>	<b>MTD</b>	<b>YTD</b>	<b>1YR</b>	<b>3YR</b>	<b>5YR</b>	<b>7YR</b>	<b>10YR</b>	<b>15YR</b>
Bloomberg 1-3-Month T-Bill	0.3%	0.7%	5.2%	4.2%	2.6%	2.4%	1.8%	1.2%
Bloomberg U.S. TIPS	2.2%	3.5%	6.4%	-0.8%	1.9%	3.1%	2.4%	3.1%
Bloomberg Municipal Bond (5 Year)	0.9%	1.5%	3.0%	1.5%	0.8%	1.9%	1.7%	2.3%
Bloomberg High Yield Municipal Bond	1.2%	2.0%	8.1%	2.0%	2.1%	4.5%	4.3%	5.6%
Bloomberg U.S. Aggregate	2.2%	2.7%	5.8%	-0.4%	-0.5%	1.7%	1.5%	2.4%
Bloomberg U.S. Corporate High Yield	0.7%	2.0%	10.1%	4.9%	4.9%	5.0%	5.1%	6.5%
Bloomberg Global Aggregate ex-U.S. Hedged	0.4%	0.6%	6.0%	1.9%	0.6%	2.3%	2.4%	3.1%
Bloomberg Global Aggregate ex-U.S. Unhedged	0.8%	1.4%	0.6%	-4.9%	-3.2%	-2.1%	-0.5%	0.0%
Bloomberg U.S. Long Gov / Credit	4.3%	4.8%	4.5%	-5.4%	-4.1%	0.9%	1.2%	4.0%
<b>Global Equity Markets</b>	<b>MTD</b>	<b>YTD</b>	<b>1YR</b>	<b>3YR</b>	<b>5YR</b>	<b>7YR</b>	<b>10YR</b>	<b>15YR</b>
S&P 500	-1.3%	1.4%	18.4%	12.5%	16.9%	13.8%	13.0%	14.0%
Dow Jones Industrial Average	-1.4%	3.3%	14.4%	11.2%	13.8%	10.6%	11.7%	12.7%
NASDAQ Composite	-3.9%	-2.3%	17.9%	12.0%	18.0%	15.6%	15.4%	16.4%
Russell 3000	-1.9%	1.2%	17.5%	11.6%	16.1%	13.1%	12.4%	13.7%
Russell 1000	-1.7%	1.4%	18.1%	12.1%	16.5%	13.5%	12.7%	13.9%
Russell 1000 Growth	-3.6%	-1.7%	19.7%	14.8%	19.7%	17.1%	16.0%	16.4%
Russell 1000 Value	0.4%	5.1%	15.8%	8.7%	12.5%	9.4%	9.0%	11.1%
Russell Mid Cap	-2.8%	1.3%	12.2%	7.2%	12.4%	9.9%	9.3%	12.1%
Russell Mid Cap Growth	-5.7%	0.3%	14.5%	9.5%	12.9%	11.8%	11.0%	13.3%
Russell Mid Cap Value	-1.8%	1.6%	11.7%	6.1%	11.7%	8.4%	8.0%	11.1%
Russell 2000	-5.3%	-2.9%	6.7%	3.3%	9.4%	6.7%	7.2%	10.1%
Russell 2000 Growth	-6.8%	-3.8%	5.8%	3.6%	7.9%	6.4%	7.2%	10.7%
Russell 2000 Value	-3.8%	-1.9%	7.6%	2.8%	10.3%	6.4%	6.9%	9.2%
MSCI ACWI	-0.6%	2.7%	15.1%	9.1%	12.8%	9.4%	9.1%	9.6%
MSCI ACWI ex. U.S.	1.4%	5.5%	9.7%	4.6%	7.6%	4.2%	4.8%	5.4%
MSCI EAFE	1.9%	7.3%	8.8%	6.4%	8.7%	5.1%	5.3%	6.1%
MSCI EAFE Growth	0.1%	5.5%	3.0%	3.7%	7.2%	5.2%	5.7%	6.6%
MSCI EAFE Value	3.7%	9.0%	15.1%	9.1%	9.9%	4.7%	4.6%	5.4%
MSCI EAFE Small Cap	-0.3%	3.1%	6.4%	0.7%	5.7%	2.3%	5.2%	6.9%
MSCI Emerging Markets	0.5%	2.3%	10.1%	0.5%	4.3%	1.2%	3.5%	3.5%
<b>Alternatives</b>	<b>MTD</b>	<b>YTD</b>	<b>1YR</b>	<b>3YR</b>	<b>5YR</b>	<b>7YR</b>	<b>10YR</b>	<b>15YR</b>
Consumer Price Index*	0.5%	0.5%	3.0%	4.1%	4.3%	3.6%	3.1%	2.6%
FTSE NAREIT All Equity REITs	4.2%	5.2%	13.9%	1.4%	5.6%	7.8%	6.1%	9.8%
S&P Real Assets	1.7%	3.4%	9.9%	1.8%	5.1%	4.7%	3.9%	5.5%
FTSE EPRA NAREIT Developed	2.3%	4.1%	11.2%	-1.1%	2.3%	3.9%	3.2%	6.6%
FTSE EPRA NAREIT Developed ex U.S.	-0.4%	2.9%	3.0%	-6.6%	-3.2%	-1.2%	0.2%	3.5%
Bloomberg Commodity Total Return	0.8%	4.8%	11.6%	0.7%	10.6%	4.8%	1.8%	-0.5%
HFRI Fund of Funds Composite*	1.2%	1.2%	9.7%	4.4%	5.4%	4.1%	3.9%	3.7%
HFRI Asset Weighted Composite*	1.6%	1.6%	9.6%	5.1%	4.9%	4.1%	4.0%	4.6%
Alerian MLP	3.4%	12.5%	28.5%	25.8%	23.4%	12.4%	5.0%	8.3%

Sources: Morningstar, FactSet. As of February 28, 2025. \*Consumer Price Index and HFRI indexes as of January 31, 2025.

See disclosures for list of indices representing each asset class. Past performance does not indicate future performance and there is a possibility of a loss. Indices cannot be invested in directly.

# Disclosures and Definitions

This document is intended for the exclusive use of clients or prospective clients of PCS Advisors. Any additional dissemination or distribution is strictly prohibited. Information provided in this document is for informational and/or educational purposes only and is not, in any way, to be considered investment advice nor a recommendation of any investment product or service. Advice may only be provided after entering into an engagement agreement and providing PCS Advisors with all requested background and account information. In partnership with Fiducient Advisors, the included information has been obtained from a variety of sources believed to be reliable though not independently verified. Any forecasts represent future expectations and actual returns, volatilities and correlations will differ from forecasts. Past performance does not indicate future performance and there is a possibility of a loss. Please visit [www.pcsbd.net/disclosures](http://www.pcsbd.net/disclosures) for other important disclosures. Private Client Services is an SEC Registered Investment Advisor doing business as PCS Advisors. For information about Fiducient Advisors please visit [www.fiducientadvisors.com](http://www.fiducientadvisors.com).

When referencing asset class returns or statistics, the following indices are used to represent those asset classes, unless otherwise noted. Each index is unmanaged, and investors can not actually invest directly into an index:

TIPS: Bloomberg Global Inflation-Linked: U.S. TIPS Total Return Index Unhedged  
Municipals 5-Year: Bloomberg Municipal Bond 5 Year (4-6) Total Return Index Unhedged USD  
Core Bond: Bloomberg US Aggregate Total Return Index USD  
High Yield Municipals: Bloomberg Muni High Yield Total Return Index Value Unhedged USD  
High Yield: Bloomberg US Corporate High Yield Total Return Index USD  
U.S. Long Duration: Bloomberg US Aggregate Government & Credit - Long  
Foreign Bond: Bloomberg Global Aggregate ex-USD Total Return Index Value USD (50/50 blend of hedged and unhedged)  
Real Assets: S&P Real Assets  
U.S. Large Cap: Russell 1000 Total Return Index  
U.S. Small Cap : Russell 2000 Total Return Index  
International Developed: MSCI EAFE Net Total Return USD Index  
Emerging Markets: MSCI Emerging Markets Net Total Return USD Index  
U.S Equity REITs: FTSE Nareit All Equity REITs Total Return Index USD  
Commodities: Bloomberg Commodity Total Return Index  
Hedge Funds: Hedge Fund Research HFRI Fund of Funds Composite Index  
Foreign Bond: Bloomberg Global Aggregate x USD Total Return Unhedged  
U.S. Core Bond: Bloomberg U.S. Aggregate Total Return Index USD  
U.S. High Yield: Bloomberg US Corporate High Yield Total Return Index USD  
U.S. MBS: Bloomberg U.S. MBS (30Y) Total Return Index  
U.S. All Cap: Russell 3000 Total Return Index  
U.S. Large Cap: Russell 1000 Total Return Index  
U.S. Small Cap: Russell 2000 Total Return Index  
US Value: Russell 3000 Value Total Return Index  
US Growth: Russell 3000 Growth Total Return Index  
International Developed All Cap: MSCI EAFE IMI Net Total Return USD Index  
International Developed Large Cap: MSCI EAFE Large Cap Net Total Return USD Index  
International Developed Small Cap: MSCI EAFE Small Cap Net Total Return USD Index  
International Developed Value: MSCI EAFE Value Net Total Return USD Index  
International Developed Growth: MSCI EAFE Growth Net Total Return USD Index  
Emerging Markets All Cap: MSCI Emerging Markets IMI Net Total Return USD Index  
Emerging Markets Large Cap: MSCI Emerging Markets Large Cap Net Total Return USD Index  
Emerging Markets Small Cap: MSCI Emerging Markets Small Cap Net Total Return USD Index  
Emerging Markets Value: MSCI Emerging Markets Value Net Total Return USD Index  
Emerging Markets Growth: MSCI Emerging Markets Growth Net Total Return USD Index



# Material Risks & Limitations

---

**Fixed Income** securities are subject to interest rate risks, the risk of default and liquidity risk. U.S. investors exposed to non-U.S. fixed income may also be subject to currency risk and fluctuations.

**Cash** may be subject to the loss of principal and over longer period of time may lose purchasing power due to inflation.

**Domestic Equity** can be volatile. The rise or fall in prices take place for a number of reasons including, but not limited to changes to underlying company conditions, sector or industry factors, or other macro events. These may happen quickly and unpredictably.

**International Equity** can be volatile. The rise or fall in prices take place for a number of reasons including, but not limited to changes to underlying company conditions, sector or industry impacts, or other macro events. These may happen quickly and unpredictably. International equity allocations may also be impact by currency and/or country specific risks which may result in lower liquidity in some markets.

**Real Assets** can be volatile and may include asset segments that may have greater volatility than investment in traditional equity securities. Such volatility could be influenced by a myriad of factors including, but not limited to overall market volatility, changes in interest rates, political and regulatory developments, or other exogenous events like weather or natural disaster.

**Private Equity** involves higher risk and is suitable only for sophisticated investors. Along with traditional equity market risks, private equity investments are also subject to higher fees, lower liquidity and the potential for leverage that may amplify volatility and/or the potential loss of capital.

**Private Credit** involves higher risk and is suitable only for sophisticated investors. These assets are subject to interest rate risks, the risk of default and limited liquidity. U.S. investors exposed to non-U.S. private credit may also be subject to currency risk and fluctuations.

**Private Real Estate** involves higher risk and is suitable only for sophisticated investors. Real estate assets can be volatile and may include unique risks to the asset class like leverage and/or industry, sector or geographical concentration. Declines in real estate value may take place for a number of reasons including, but are not limited to economic conditions, change in condition of the underlying property or defaults by the borrow.

**Marketable Alternatives** involves higher risk and is suitable only for sophisticated investors. Along with traditional market risks, marketable alternatives are also subject to higher fees, lower liquidity and the potential for leverage that may amplify volatility or the potential for loss of capital. Additionally, short selling involved certain risks including, but not limited to additional costs, and the potential for unlimited loss on certain short sale positions.

# Disclosures – Index & Benchmark Definitions

## Index & Benchmark Definitions

### Fixed Income

- **Bloomberg 1-3 Month U.S. Treasury Bill Index** is designed to measure the performance of public obligations of the U.S. Treasury that have a remaining maturity of greater than or equal to 1 month and less than 3 months.
- **Bloomberg U.S. Aggregate Index** covers the U.S. investment grade fixed rate bond market, with index components for government and corporate securities, mortgage pass-through securities, and asset-backed securities.
- **Bloomberg Global Aggregate ex. USD Indices** represent a broad-based measure of the global investment-grade fixed income markets. The two major components of this index are the Pan-European Aggregate and the Asian-Pacific Aggregate Indices. The index also includes Eurodollar and Euro-Yen corporate bonds and Canadian government, agency and corporate securities.
- **Bloomberg U.S. Corporate High Yield Index** covers the universe of fixed rate, non-investment grade debt. Eurobonds and debt issues from countries designated as emerging markets (sovereign rating of Baa1/BBB+/BBB+ and below using the middle of Moody's, S&P, and Fitch) are excluded, but Canadian and global bonds (SEC registered) of issuers in non-EMG countries are included.
- **Bloomberg US Government/Credit 1-3 Year Index** is the 1-3 year component of the U.S. Government/Credit Index, which includes securities in the Government and Credit Indices. The Government Index includes treasuries and agencies, while the credit index includes publicly issued U.S. corporate and foreign debentures and secured notes that meet specified maturity, liquidity, and quality requirements.
- **Bloomberg US Government/Credit Long Index** is the Long component of the U.S. Government/Credit Index, which includes securities in the Government and Credit Indices. The Government Index includes treasuries and agencies, while the credit index includes publicly issued U.S. corporate and foreign debentures and secured notes that meet specified maturity, liquidity and quality requirements.
- **Bloomberg US Treasury Inflation Protected Securities Index** consists of Inflation-Protection securities issued by the U.S. Treasury.
- **Bloomberg Muni Index** is a rules-based, market-value-weighted index engineered for the long-term tax-exempt bond market. Bonds must be rated investment-grade by at least two ratings agencies.
- **Bloomberg High Yield Municipal Bond Index** covers the universe of fixed rate, non-investment grade debt.
- **Bloomberg Intermediate U.S. Gov't/Credit** is the Intermediate component of the U.S. Government/Credit index, which includes securities in the Government and Credit Indices. The Government Index includes treasuries and agencies, while the credit index includes publicly issued U.S. corporate and foreign debentures and secured notes that meet specified maturity, liquidity, and quality requirements.
- **JPMorgan GBI-EM Global Diversified** tracks the performance of local currency debt issued by emerging market governments, whose debt is accessible by most of the international investor base.

### Equity

- **The S&P 500 Index** is a capitalization-weighted index designed to measure performance of the broad domestic economy through changes in the aggregate market value of 500 stocks representing all major industries. **Russell 3000 Value Index** measures the performance of those Russell 3000 companies with lower P/B ratios and lower forecasted growth values.
- **Russell 3000 Index** is a market-cap-weighted index which consists of roughly 3,000 of the largest companies in the U.S. as determined by market capitalization. It represents nearly 98% of the investable U.S. equity market.
- **Russell 3000 Growth Index** measures the performance of those Russell 3000 companies with higher P/B ratios and higher forecasted growth values.
- **Russell 1000 Value Index** measures the performance of those Russell 1000 companies with lower P/B ratios and lower forecasted growth values.
- **Russell 1000 Index** consists of the largest 1000 companies in the Russell 3000 Index.
- **Russell 1000 Growth Index** measures the performance of those Russell 1000 companies with higher P/B ratios and higher forecasted growth values.
- **Russell Mid Cap Value Index** measures the performance of those Russell Mid Cap companies with lower P/B ratios and lower forecasted growth values.
- **Russell Mid Cap Index** measures the performance of the 800 smallest companies in the Russell 1000 Index.
- **Russell Mid Cap Growth Index** measures the performance of those Russell Mid Cap companies with higher P/B ratios and higher forecasted growth values.
- **Russell 2000 Value Index** measures the performance of those Russell 2000 companies with lower P/B ratios and lower forecasted growth values.
- **Russell 2000** consists of the 2,000 smallest U.S. companies in the Russell 3000 index.
- **Russell 2000 Growth Index** measures the performance of the Russell 2000 companies with higher P/B ratios and higher forecasted growth values.
- **MSCI ACWI (All Country World Index) ex. U.S. Index** captures large and mid-cap representation across Developed Markets countries (excluding the United States) and Emerging Markets countries. The index covers approximately 85% of the global equity opportunity set outside the U.S.
- **MSCI ACWI Index** captures large and mid cap representation across Developed Markets and Emerging Markets countries. The index covers approximately 85% of the global investable opportunity set.
- **MSCI EAFE IMI Index** is an equity index which captures large, mid and small cap representation across Developed Markets countries around the world, excluding the U.S. and Canada. The index covers approximately 99% of the free float-adjusted market capitalization in each country.
- **MSCI EAFE Value Index** captures large and mid cap securities exhibiting overall value style characteristics across Developed Markets countries around the world, excluding the US and Canada. The value investment style characteristics for index construction are defined using three variables: book value to price, 12-month forward earnings to price and dividend yield.
- **MSCI EAFE Index** is an equity index which captures large and mid-cap representation across Developed Markets countries around the world, excluding the U.S. and Canada. The index covers approximately 85% of the free float-adjusted market capitalization in each country.

# Disclosures – Index & Benchmark Definitions

- **MSCI EAFE Growth Index** captures large and mid cap securities exhibiting overall growth style characteristics across Developed Markets countries around the world, excluding the US and Canada. The growth investment style characteristics for index construction are defined using five variables: long-term forward EPS growth rate, short-term forward EPS growth rate, current internal growth rate and long-term historical EPS growth trend and long-term historical sales per share growth trend.
- **MSCI EAFE Large Cap Index** is an equity index which captures large cap representation across Developed Markets countries around the world, excluding the US and Canada. The index covers approximately 70% of the free-float adjusted market capitalization in each country.
- **MSCI EAFE Small Cap Index** is an equity index which captures small cap representation across Developed Markets countries around the world, excluding the US and Canada. The index covers approximately 14% of the free float adjusted market in each country.
- **MSCI ACWI (All Country World Index) ex. U.S. Index** captures large and mid-cap representation across Developed Markets countries (excluding the United States) and Emerging Markets countries. The index covers approximately 85% of the global equity opportunity set outside the U.S.
- **MSCI Emerging Markets IMI Index** captures large, mid and small cap representation across 24 Emerging Markets countries. The index covers approximately 99% of the free-float adjusted market capitalization in each country.
- **MSCI Emerging Markets Value Index** captures large and mid-cap securities exhibiting overall value style characteristics across Emerging Markets countries. The value investment style characteristics for index construction are defined using three variables: book value to price, 12-month forward earnings to price and dividend yield.
- **MSCI Emerging Markets Index** captures large and mid-cap representation across Emerging Markets countries. The index covers approximately 85% of the free-float adjusted market capitalization in each country.
- **MSCI Emerging Markets Growth Index** captures large and mid-cap representation across Emerging Markets countries. The growth investment style characteristics for index construction are defined using five variables: long-term forward EPS growth rate, short-term forward EPS growth rate, current internal growth rate and long-term historical EPS growth trend and long-term historical sales per share growth trend.
- **MSCI Emerging Markets Index** captures large and mid-cap representation across Emerging Markets countries. The index covers approximately 85% of the free-float adjusted market capitalization in each country.
- **MSCI Emerging Markets (EM) Small Cap Index** includes small cap representation across Emerging Markets countries. The index covers approximately 14% of the free float-adjusted market capitalization in each country. The small cap segment tends to capture more local economic and sector characteristics relative to larger Emerging Markets capitalization segments.

## *Alternatives & Miscellaneous*

- **S&P Real Asset Index** is designed to measure global property, infrastructure, commodities, and inflation-linked bonds using liquid and investable component indices that track public equities, fixed income, and futures. In the index, equity holds 50% weight, commodities 10%, and fixed income 40%.
- **FTSE Nareit All Equity REITs Index** is a free-float adjusted, market capitalization-weighted index of U.S. equity REITs. Constituents of the index include all tax-qualified REITs with more than 50 percent of total assets in qualifying real estate assets other than mortgages secured by real property.
- **FTSE EPRA Nareit Developed Index** is designed to track the performance of listed real estate companies and REITs worldwide.
- **FTSE EPRA Nareit Developed ex US Index** is a subset of the FTSE EPRA Nareit Developed Index and is designed to track the performance of listed real estate companies and REITs in developed markets excluding the US.
- **Bloomberg Commodity Index** is calculated on an excess return basis and reflects commodity futures price movements. The index rebalances annually weighted 2/3 by trading volume and 1/3 by world production and weight-caps are applied at the commodity, sector and group level for diversification.
- **HFRI Asset Weighted Composite Index** is a global, asset-weighted index comprised of single-manager funds that report to HFR Database. Constituent funds report monthly net of all fees performance in US Dollar and have a minimum of \$50 Million under management or \$10 Million under management and a twelve (12) month track record of active performance. The HFRI Asset Weighted Composite Index does not include Funds of Hedge Funds. The constituent funds of the HFRI Asset Weighted Composite Index are weighted according to the AUM reported by each fund for the prior month.
- **HFRI Fund of Funds Composite Index** is a global, equal-weighted index of all fund of hedge funds that report to the HFR Database. Constituent funds report monthly net of all fees performance in U.S. Dollars and have a minimum of \$50 million under management or a twelve (12) month track record of active performance.
- **The Alerian MLP Index** is a float adjusted, capitalization-weighted index, whose constituents represent approximately 85% of total float-adjusted market capitalization, is disseminated real-time on a price-return basis (AMZ) and on a total-return basis.

## *Additional Information*

- Equity sector returns are calculated by S&P, Russell, and MSCI for domestic and international markets, respectively. S&P and MSCI sector definitions correspond to the GICS® classification (Global Industry Classification System); Russell uses its own sector and industry classifications.
- MSCI country indices are free float-adjusted market capitalization indices that are designed to measure equity market performance of approximately 85% of the market capitalization in each specific country.
- Currency returns are calculated using FactSet's historical spot rates and are calculated using the U.S. dollar as the base currency.